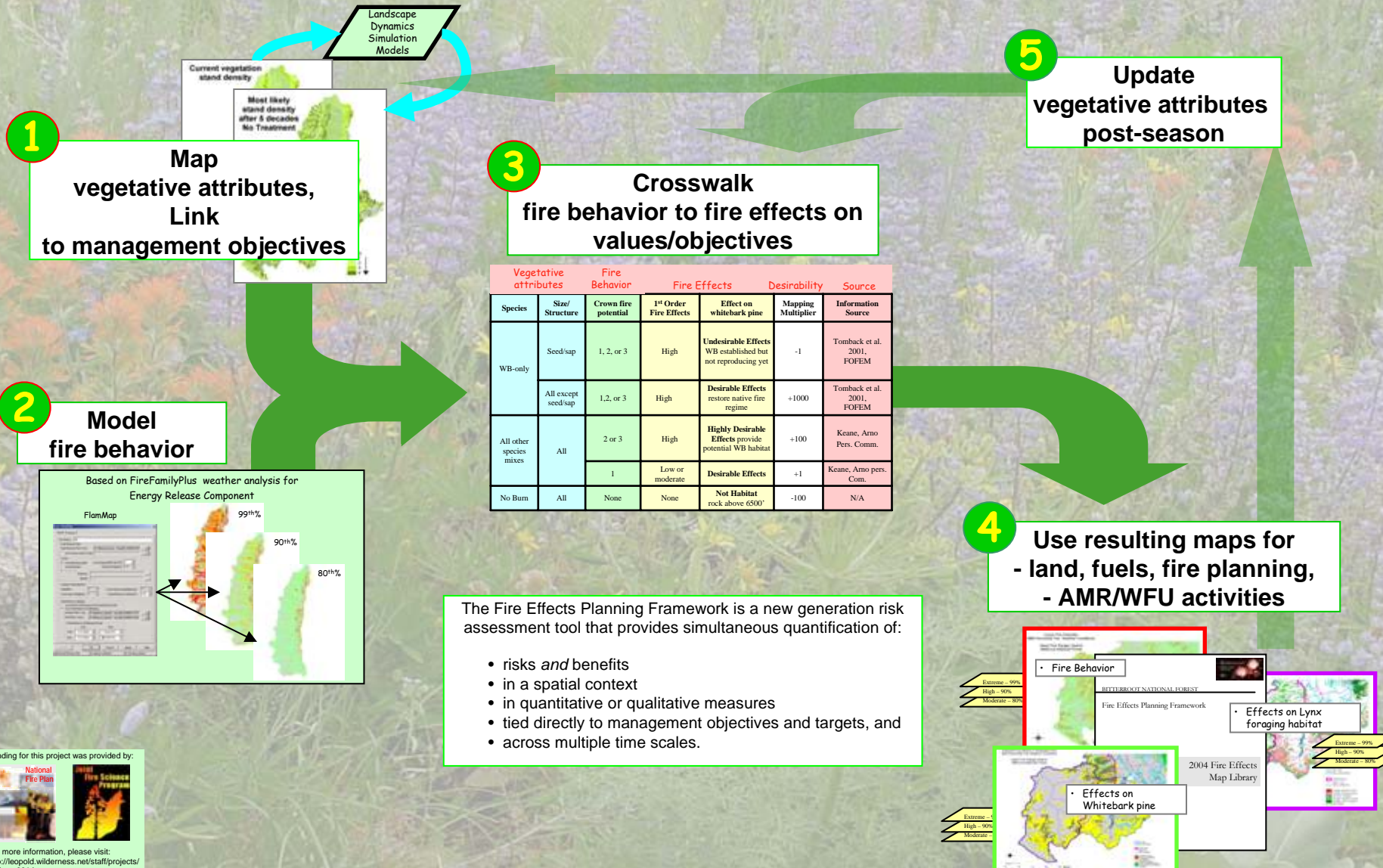


Fire Effects Planning Framework (FEPF)

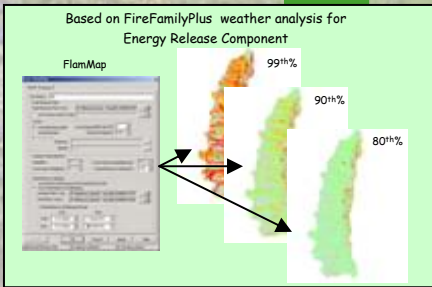
Supporting fuels and fire activities by developing information of fire effects on management indicators and objectives

Anne Black, Carol Miller, Peter Landres
Aldo Leopold Wilderness Research Institute



1 Map vegetative attributes, Link to management objectives

2 Model fire behavior



3 Crosswalk fire behavior to fire effects on values/objectives

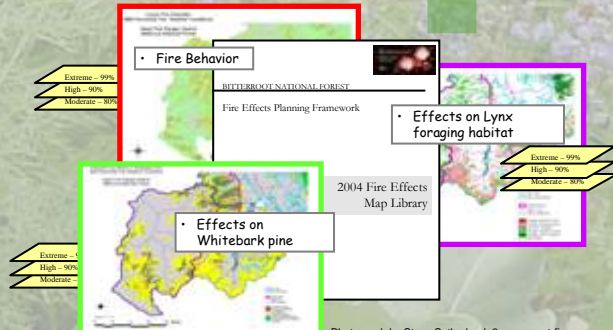
Vegetative attributes		Fire Behavior		Fire Effects		Desirability	Source
Species	Size/ Structure	Crown fire potential	1 st Order Fire Effects	Effect on whitebark pine	Mapping Multiplier	Information Source	
WB-only	Seed/sap	1, 2, or 3	High	Undesirable Effects WB established but not reproducing yet	-1	Tomback et al. 2001, FOEM	
	All except seed/sap	1,2, or 3	High	Desirable Effects restore native fire regime	+1000	Tomback et al. 2001, FOEM	
All other species mixes	All	2 or 3	High	Highly Desirable Effects provide potential WB habitat	+100	Keane, Arno Pers. Comm.	
		1	Low or moderate	Desirable Effects	+1	Keane, Arno pers. Com.	
No Burn	All	None	None	Not Habitat rock above 6500'	-100	N/A	

The Fire Effects Planning Framework is a new generation risk assessment tool that provides simultaneous quantification of:

- risks *and* benefits
- in a spatial context
- in quantitative or qualitative measures
- tied directly to management objectives and targets, and
- across multiple time scales.

5 Update vegetative attributes post-season

4 Use resulting maps for - land, fuels, fire planning, - AMR/WFU activities



Funding for this project was provided by:

For more information, please visit:
http://leopold.wilderness.net/staff/projects/project_001.htm