

Wildland Fuels Management: evaluating risks and benefits



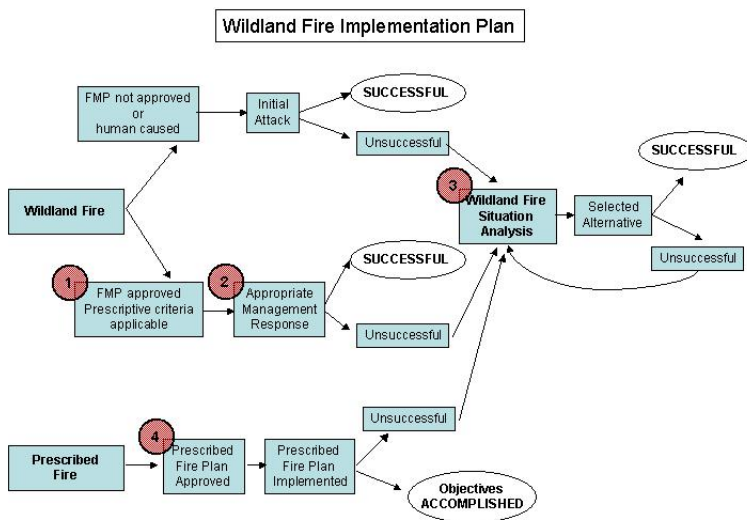
Frequently Asked Questions...

10. How can this process assist in developing WFIP's and WFSAs?

Overview...

Since options for fire management tactics are initially set at the broad-scale in the Land/Resource management plans and tier down, we developed our process to generate information appropriate to each of the planning scales: broad-scale, 10-15 year time frames; annual plans for Fire Management, prescribed burn and fuels treatment; and daily to monthly planning at the incident level. The key is to develop this information in the off-season and have it available in digital and/or hard copy form readily accessible to decision-makers.

This fact sheet identifies how information generated through our process may be used at each planning step mandated in the federal Wildland and Prescribed Fire Management Policy – Implementation Procedures Reference Guide, published by the NIFC (National Interagency Fire Center) in August 1998. Numbers on the graphic are explained in the text of the same number.



Adapted from the Wildland and Prescribed Fire Management Policy – Implementation Procedures Reference Guide, August 1998.

1. FMP approved prescriptive criteria applicable...

a. Long-range planning... The protocol can facilitate fire management by assisting in establishing the range of acceptable appropriate management responses codified in the Land/Resource Management Plan. At the broad-scale, the protocol generates maps and criteria for identifying fire use opportunities – an important input into establishment of long range objectives, conditions/standards and guidelines for fire use and desired future conditions for each management area

b. Fire Management Planning... The protocol can also be used in development and revision of Fire Management Plans by generating information at the mid-scale to:

- identify resources values, objectives/desired conditions/standards and guides, and constraints for each management/response unit; and
- set Fire Management or Maximum Manageable Areas.

2. Appropriate Management Response... Appropriate Management Response includes development of WFIP Stage I, II and III reports. Pre-planning can assist in developing these reports by providing spatial and tabular summaries of opportunities to achieve resource benefits under a variety of

fire weather threshold conditions. This information is critical to developing and selecting effective and appropriate alternatives.

3. Wildland Fire Situation Analysis... Even under a suppression strategy, use of pre-developed map layers identifying areas of ecological benefit and risk may still be useful in developing and prioritizing fire management activities. Spatial identification of potential benefits can help management teams target areas for contain or confine strategies instead of the generally more resource intensive control tactics. Map layers may also be indispensable for teams unfamiliar with the fire area or ecology.

4. Prescribed Fire Plan Approved... Map layers identifying ecological benefits also identify areas of ecological risk. These are areas and conditions under which a natural ignition is likely to produce unwanted consequences. Such areas should be prime targets for prescribed or mechanical treatments. Analysis of smoke profiles (production at the landscape level over time) can be instrumental in prioritizing prescribed burning opportunities.

For more information contact: Anne Black, 406-329.2126, aebblack@fs.fed.us
And visit our website: <http://leopold.wilderness.net/research/fprojects/F001.htm> where we post examples and demonstrations.

Fire Research at the Aldo Leopold Wilderness Research Institute

The Aldo Leopold Wilderness Research Institute is helping managers devise effective strategies for managing fire and fuels across the full spectrum of lands extending from wilderness outward to the wildland urban interface. Our research encompasses the ecological and social sciences and is focused on three areas: 1) understanding natural fire regimes and their alteration by management, 2) developing information and tools to improve fire and fuel management planning, and 3) anticipating consequences of management alternatives.

For a complete list of fire-related research activities at the Leopold Institute, visit <http://leopold.wilderness.net/research/fire.htm>, or contact Carol Miller, 406-542-4198, cmiller04@fs.fed.us.

The Aldo Leopold Wilderness Research Institute is the only Federal research group in the United States dedicated to the development and dissemination of knowledge needed to improve management of wilderness, parks, and similarly protected areas. We provide a national center for scientists from different disciplines and backgrounds to address the wilderness research needs of land management agencies and organizations. The Leopold Institute was formally established in 1993 by the U.S. Forest Service and is administered by the Rocky Mountain Research Station. We operate under an agreement with the U.S. Forest Service, U.S. Geological Survey, Bureau of Land Management, U.S. Fish and Wildlife Service, and the National Park Service. Support for our fire research program includes funding from the National Fire Plan, Joint Fire Sciences Program, and the Bitterroot Ecosystem Management Research Program.

FEATURED PROJECTS

Leopold Institute

Wildland Fuels Management:
evaluating risks *and* benefits



<http://leopold.wilderness.net/research/fprojects/F001.htm>